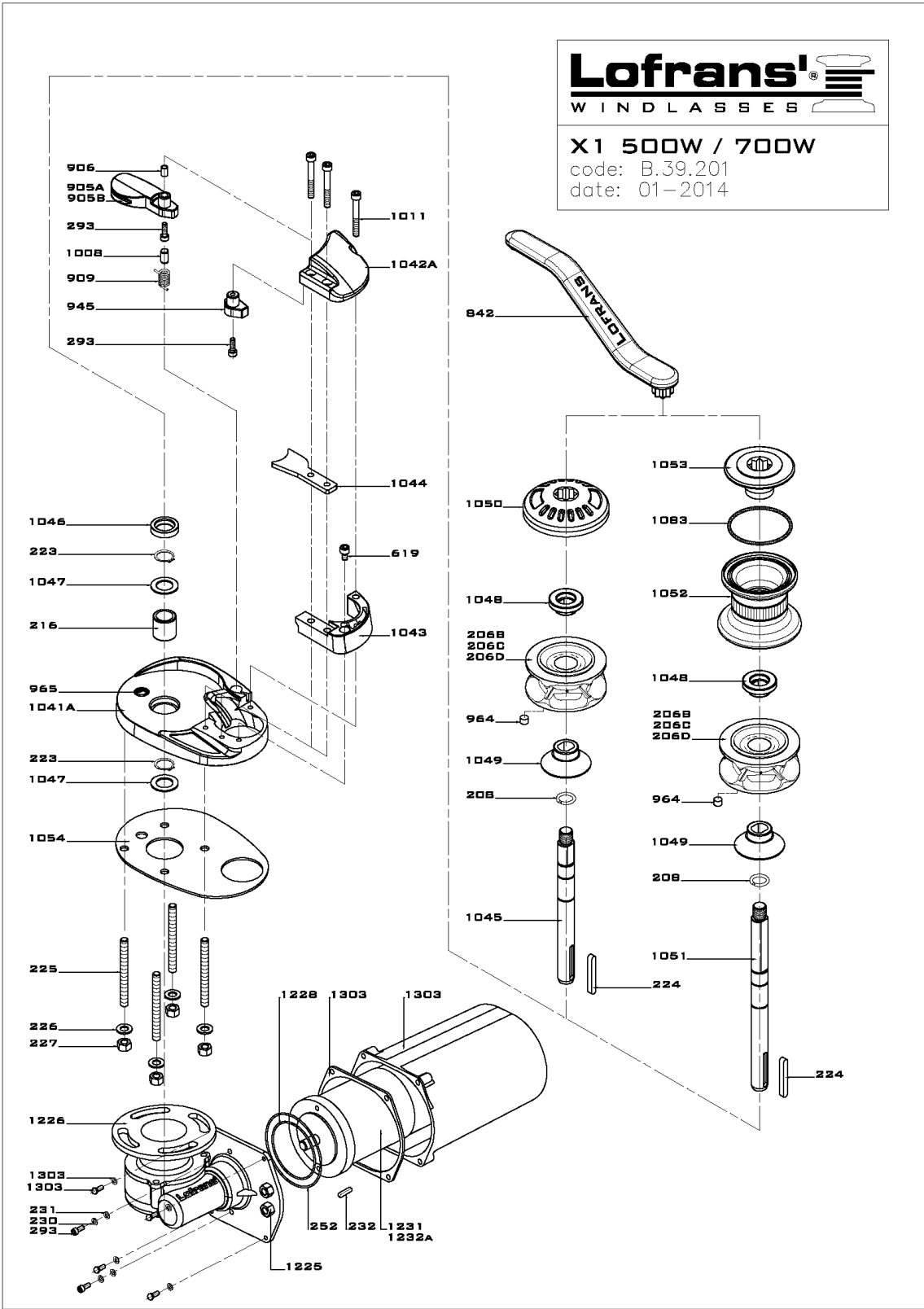


**Lofrans<sup>®</sup>**  
WINDLASSES

**X1 500W / 700W**  
code: B.39.201  
date: 01-2014



# X1 500W 700W IP67

| Item  | Description                | Kit       | Q.ty |
|-------|----------------------------|-----------|------|
| 208   | Ring                       |           | 1    |
| 216   | Bush                       |           | 1    |
| 223   | Circlip - 18 Din 471       | Kit D     | 2    |
| 224   | Key - 6x6x45               | Kit C     | 1    |
| 226   | Washer for M8 screw        | Kit B     | 4    |
| 227   | Nut - M8                   | Kit B     | 4    |
| 230   | Spring washer for M5 screw | Kit B     | 2    |
| 231   | Washer for M5 screw        | Kit B     | 2    |
| 232   | Key - 4x4x15               | Kit C     | 1    |
| 252   | O Ring 2325                |           | 1    |
| 293   | Hd cap screw M5x16         | Kit F     | 3    |
| 619   | Hd cap screw M6x10         | Kit B     | 1    |
| 906   | Spacer                     | Kit F     | 1    |
| 909   | Spring                     | Kit F     | 1    |
| 945   | Cap                        | Kit F     | 1    |
| 964   | Magnet                     | Kit S     | 1    |
| 965   | Sensor                     | Kit S     | 1    |
| 1008  | Pivot 7x14                 | Kit F     | 1    |
| 1011  | Hd cap screw M6x40         | Kit B     | 3    |
| 1043  | Support                    |           | 1    |
| 1044  | Stripper                   |           | 1    |
| 1046  | Seal 18-30-7               | Kit A     | 1    |
| 1047  | Ring                       |           | 2    |
| 1048  | Clutch cone - outer        |           | 1    |
| 1049  | Clutch cone - inner        |           | 1    |
| 1050  | Gipsy cap                  |           | 1    |
| 1053  | Nut                        |           | 1    |
| 1054  | Gasket                     |           | 1    |
| 1083  | O Ring 3250                | Kit A     | 1    |
| 1225  | PG9                        |           | 2    |
| 1226  | Gearbox                    |           | 1    |
| 1228  | O Ring 2250                |           | 1    |
| 1231  | Electric motor 500W 12V    |           | 1    |
| 1303  | Complete motor cover kit   | Kit Cover | 1    |
| 1041a | Base                       |           | 1    |
| 1042a | Cover                      |           | 1    |
| 1045a | Main shaft without drum    |           | 1    |
| 1051a | Main shaft with drum       |           | 1    |
| 1052a | Drum                       |           | 1    |
| 1232a | Electric motor 700W 12V    |           | 1    |
| 206b  | Gipsy chain 6 - 5 pockets  |           | 1    |
| 206c  | Gipsy chain 7 - 6 pockets  |           | 1    |
| 206d  | Gipsy chain 8 - 5 pockets  |           | 1    |
| 225a  | Stud M8x58                 |           | 4    |
| 842a  | Handle                     |           | 1    |
| 905a  | Finger                     | Kit F     | 1    |
| 905b  | Stainless steel finger     | Kit F     | 1    |

9 LISTA PARTI

9 PART LIST

9 LISTE DE PIECES

9 LISTA PARTI

9 LISTA PARTI