

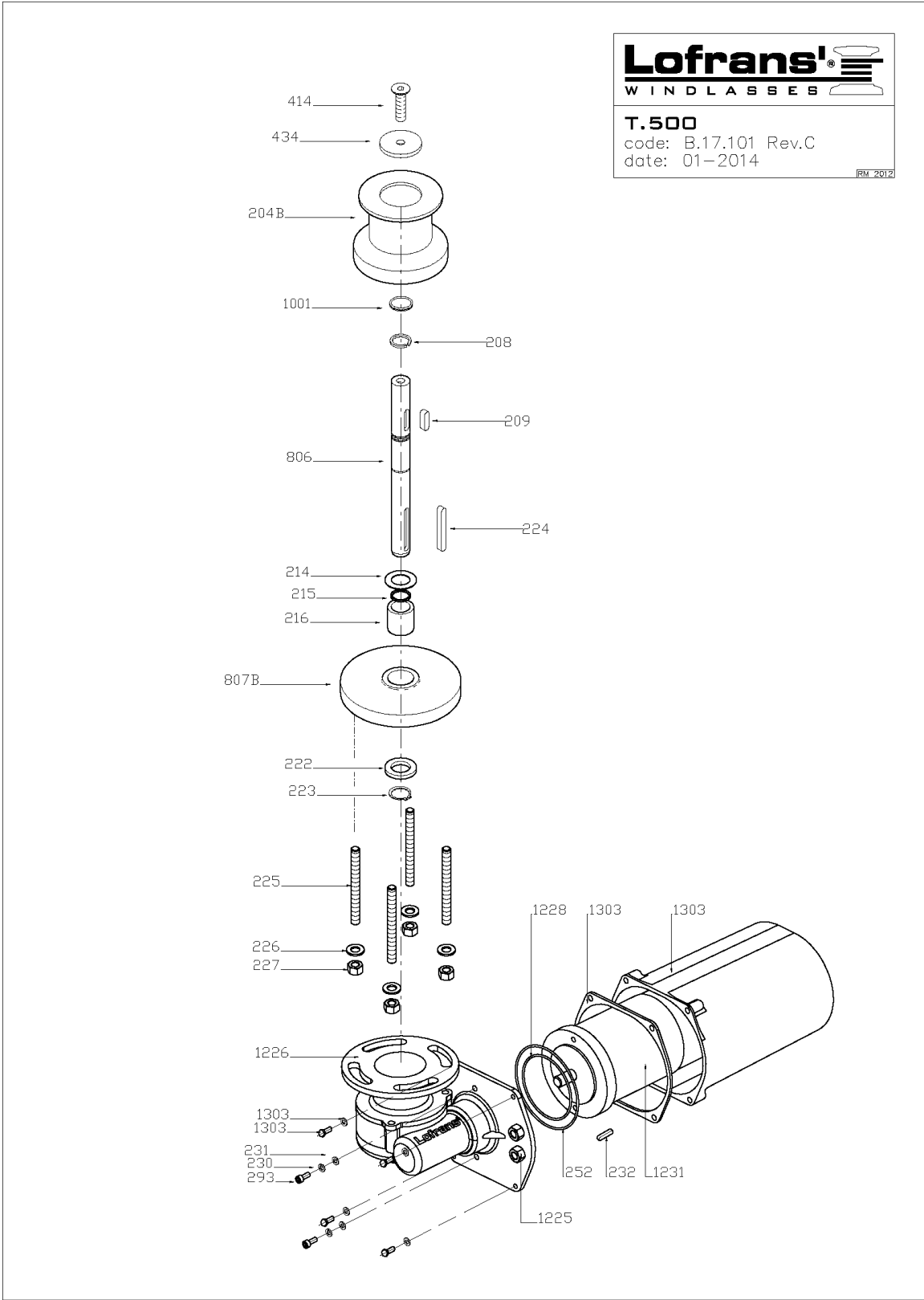
9 LISTA PARTI

9 PART LIST

9 LISTE DE PIECES

9 LISTA PARTI

9 LISTA PARTI



9 LISTA PARTI

9 PART LIST

9 LISTE DE PIECES

9 LISTA PARTI

9 LISTA PARTI

## CAPSTAN T.500

| Item | Description                | Kit       | Q.ty |
|------|----------------------------|-----------|------|
| 208  | Ring                       |           | 1    |
| 209  | Key 6x6x30                 | Kit C     | 1    |
| 214  | Washer                     |           | 1    |
| 215  | O Ring seal - 2068         | Kit A     | 1    |
| 216  | Bush                       |           | 1    |
| 222  | Washer                     |           | 1    |
| 223  | Circlip 18 Din 471         | Kit D     | 1    |
| 224  | Key 6x6x45                 | Kit C     | 1    |
| 226  | Washer for M8 screw        | Kit B     | 4    |
| 227  | Nut M8                     | Kit B     | 4    |
| 230  | Spring washer for M5 screw | Kit B     | 2    |
| 231  | Washer for M5 screw        | Kit B     | 2    |
| 232  | Key 4x4x15                 | Kit C     | 1    |
| 252  | O Ring 2325                |           | 1    |
| 283  | Hd cap screw M5x12         | Kit B     | 2    |
| 414  | Hex hd screw M8x30         | Kit B     | 1    |
| 434  | Washer                     | Kit B     | 1    |
| 1001 | Spiral retaining ring      | Kit D     | 1    |
| 1225 | PG9                        |           | 2    |
| 1226 | Gearbox                    |           | 1    |
| 1228 | O Ring 2250                |           | 1    |
| 1231 | Electric motor 500W 12V    |           | 1    |
| 1303 | Complete motor cover kit   | Kit Cover | 1    |
| 204b | Drum                       |           | 1    |
| 225a | Stud M8x58                 |           | 4    |
| 806a | Main shaft                 |           | 1    |
| 807b | Base                       |           | 1    |